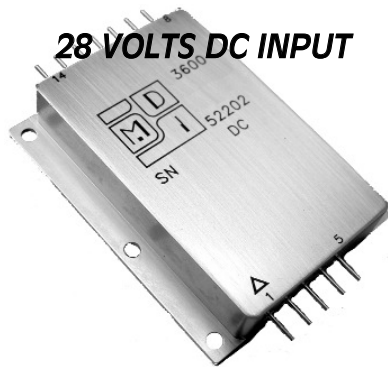


42 Watt Triple Output HYBRID

High Efficiency DC-DC CONVERTERS



Features

- Completely self contained Thick Film Hybrid DC-DC Converter
- No external filter caps required
- Fully isolated design
- "Inhibit-not" function
- Power on soft start
- 250 kHz operation for low ripple and fast response time
- Built-in EMI input filter meets MIL-STD-461C requirements CE01, CE03, CS01, CS02 and CS06
- Short circuit and overvoltage protection
- Capability of external sync for switching frequencies
- Built-in test capability

Specifications

INPUT: 28 VDC nominal

Range: 19 to 50 VDC

ISOLATION:

Input to case: 500 VDC

Input to output: 500 VDC

Output to case: 100 VDC

ENVIRONMENT:

Storage temperature: -55°C to +150°C

Shock: 50 G's, MIL-STD-810, M 516.5, P III (11mS pulse)

Acceleration: 500 G's, MIL-STD-883, M 2001, C A1 (Y1 500G limit)

Vibration: 30 G's, MIL-STD-883, M2026, C 2H (32.3g random)

Grade M:

Full Power Output at $T_{case} = +85^{\circ}C$

Linearly derates to zero at $T_{case} = +115^{\circ}C$

Grade E:

Full Power Output at $T_{case} = +125^{\circ}C$

Linearly derates to zero at $T_{case} = +135^{\circ}C$

WEIGHT: 165 grams maximum

TM

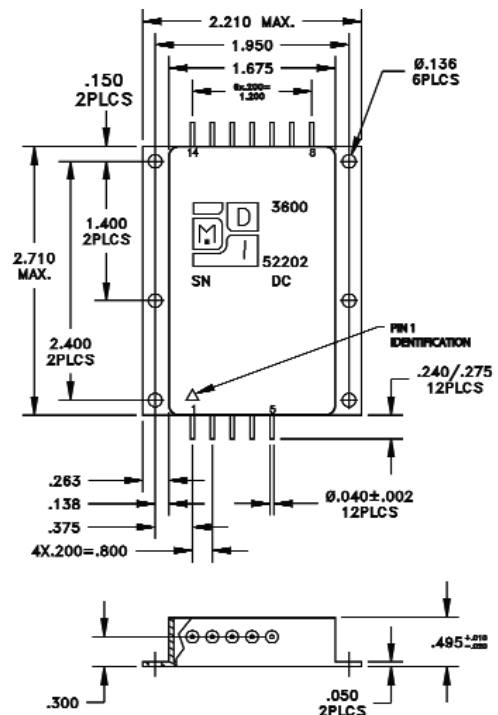
Modular Devices, Inc • One Roned Road • Shirley, New York 11967 • E-mail sales@mdipower.com • Fax 631.345.3106 • Tel 631.345.3100

Released 2012-10-09

Series 3600

TRIPLE OUTPUT DEVICES		3600 (42W)		
PARAMETER	CONDITION	MIN	TYP	MAX
Output voltage	$+I_{out} = -I_{out}$	+4.9	+5.0	+5.1
		+15.1	+15.5	+15.9
		-15.1	-15.5	-15.9
Output current	$V_{in min} - V_{in max}$	150mA	—	4A
		$\pm 75mA$	—	$\pm 750mA$
Efficiency	$P_{out} = \text{max rated load}$	83%	85%	—
Line regulation	$P_{out} = \text{max rated load}$ $V_{in min} - V_{in max}$	—	5mV	15mV
		—	$\pm 125mV$	$\pm 200mV$
Load regulation	$P_{out} = \text{min to F.L.}$	—	50mV	75mV
		—	$\pm 500mV$	$\pm 700mV$
Output ripple	F.L. BW 2 MHz mVpp	—	25	70
		—	75	125

Pin #	Designation
1	+28 VDC Input
2	+28 VDC Input Return
3	Enable
4	Sync In
5	Sync Out
6	N/C
7	N/C
8	BIT
9	-Aux Output
10	\pm Aux Output Return
11	+Aux Output
12	Chassis
13	Main Output
14	Main Output Return



GRADE LEVELS:

Please specify grade level for your application. Industrial grade units will be shipped if no option is specified.

Industrial Grade Units

M +85°C military

E +125°C military