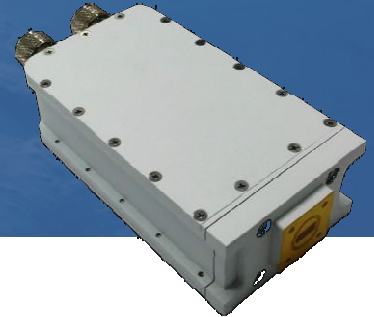


Ka BAND LNB Dual Band Series Simultaneous Output

ACLNBD-Ka-E11-V3



ACLNBS-Ka Standard Series has been designed to meet restrictive specifications for Ka Band communication systems. The equipment has a typical gain of 60 dB with a noise figure lower than 1.5 dB, with low weight and dimensions.

ACLNBS-Ka Standard Series has been tested over the specified temperature range, providing good gain stability with temperature and very high reliability.

RECEIVER SPECIFICATIONS

Input Frequency	19.2 to 21.2GHz
Input Ka-band VSWR (50Ω)	<1.3:1
Output Frequency	950 to 2000MHz (see options)
Output L-band VSWR (50Ω)	<2.0:1
Spectrum Inversion	None
Max Input level without damage	0dBm

TRANSFER SPECIFICATIONS

Gain	>60dB
Gain Flatness over the whole channel bandwidth	±2.0dB
Gain flatness over any 40MHz	±0.5dB
Gain Stability over 24 hours	±0.25dB @ const. Temp.
Gain Stability over temperature	±1.5dB over the whole range
Noise figure @25°C	≤1.6dB (1.4dB typ.)
Image rejection	>45dB
Output P1dB	>+10dBm
In-Band Spurious	<-60dBc @Pout=0dBm
Output Phase noise (IESS-308/309 – 5dB)	
100Hz	-65dBc/Hz
1Kz	-75dBc/Hz
10KHz	-85dBc/Hz
100KHz	-95dBc/Hz
External reference (Mux on L-Band output port 2)	10MHz/ 0dBm ± 5dB

POWER SUPPLY

DC Input Voltage (mux on L-band Output port 2)	12-18Vdc
DC Current Consumption @12Vdc	260 mA typ

ENVIRONMENT

Storage Temperature	-40 to +85°C
Operating Temperature	-20 to +60°C
Relative humidity	up to 100%
Operating altitude	up to 4500m

MECHANICAL

Interfaces	
RX input (Ka-band)	WR42 grooved
RX output-1 (L Band)	Type N(F) 50Ω
RX output-2 (L Band+DC+Ext. Ref)	Type N(F) 50Ω
Dimensions	
	130 x 70x 40mm
	5.1 x 2.7 x 1.6 in.
Weight	550g/1.2lbs
Finish	RAL9003 (white)

OPTIONS

LN1	RX output connector type SMA (F) 50Ω
LN2	Operating temp. -40 to +60°C
LN3	Internal Ref.

Ka-band input	L-band output	LO frequency	Standard frequency option
19.2 to 20.2GHz (band1) 20.2 to 21.2GHz (band 2)	1000 to 2000MHz (Rx1) 1000 to 2000MHz (Rx2)	18.2GHz (Path 1) 19.2GHz (Path 2)	ACLNBD-Ka-E11-V3-OA
19.2 to 20.2GHz (band1) 20.2 to 21.2GHz (band 2)	950 to 1950MHz (Rx1) 950 to 1950MHz (Rx2)	18.250GHz (Path 1) 19.250GHz (Path 2)	ACLNBD-Ka-E11-V3-OB

Based on ACORDE DATASHEET aclnbd-ka-e11-v3 Ed.01 from 05/10/16

