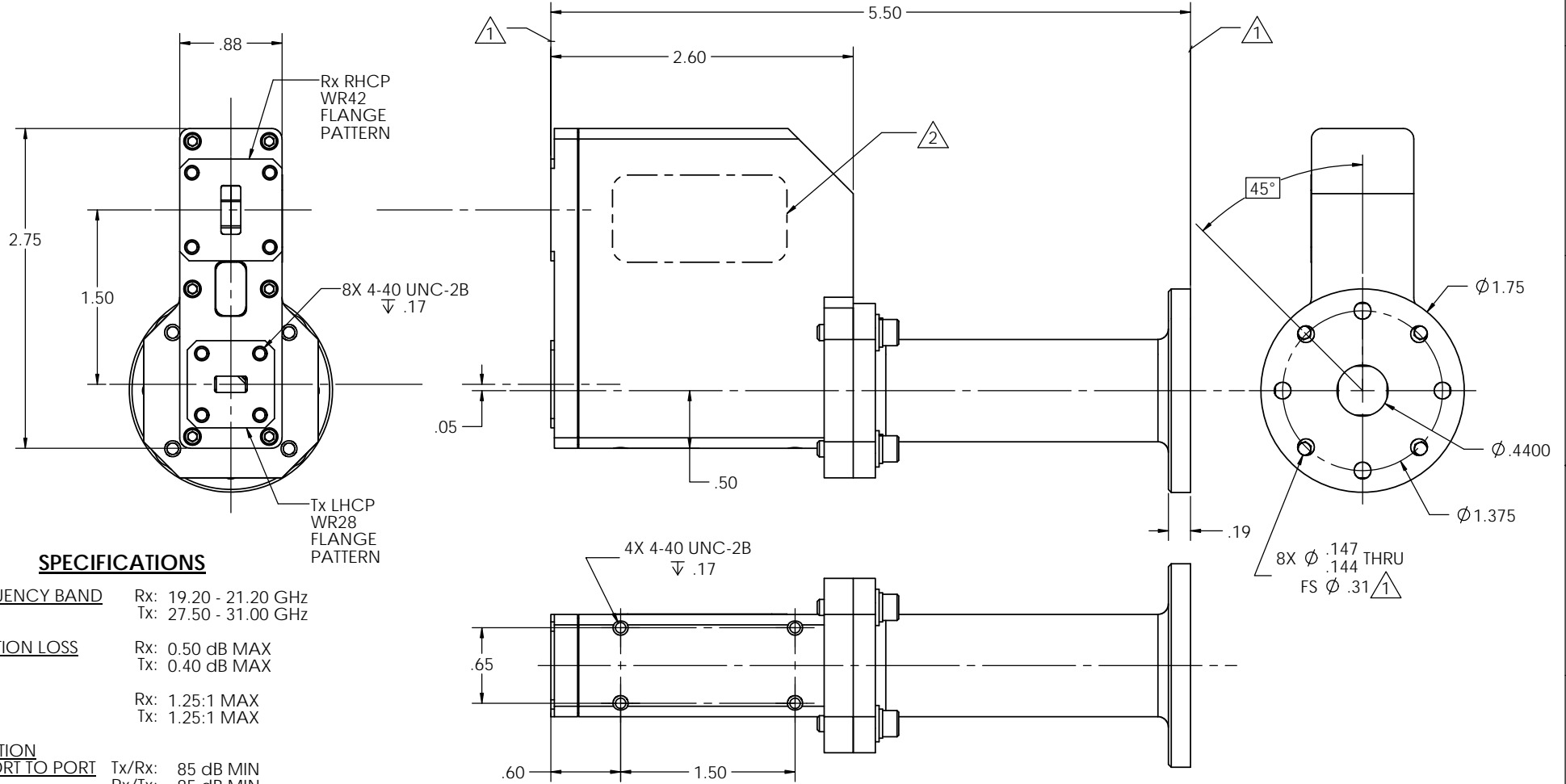


NOTES: UNLESS OTHERWISE SPECIFIED

- 1 SURFACE TO BE FREE OF PRIMER AND PAINT
- 2 ASSEMBLY IDENTIFICATION PER QMSP 7550 APPROXIMATELY WHERE SHOWN.

REVISIONS				
ZONE	REV.	DESCRIPTION	DATE	APPROVED
	-	PRODUCTION RELEASE	09 JUN 15	



SPECIFICATIONS

FREQUENCY BAND	Rx: 19.20 - 21.20 GHz Tx: 27.50 - 31.00 GHz
INSERTION LOSS	Rx: 0.50 dB MAX Tx: 0.40 dB MAX
VSWR	Rx: 1.25:1 MAX Tx: 1.25:1 MAX
ISOLATION	
PORT TO PORT	Tx/Rx: 85 dB MIN Rx/Tx: 85 dB MIN
AXIAL RATIO	Rx: 1.50 dB MAX Tx: 1.00 dB MAX
POLARIZATION	: Rx RHCP AND Tx LHCP (FACTORY SET) : Rx LHCP AND Tx RHCP (FIELD ADJUSTABLE)
POWER HANDLING	: 500W CW
WEIGHT	: 1.20 Lbs
PRESSURE	: SEALED TO 5.0 PSIG

FINISH
 INTERIOR & FLG FACES: CHROMATE CONVERSION COATED
 EXTERIOR: PAINT - WHITE COLOR No. 17875 IAW FED-STD-595

INTERFACE DRAWING

DIMENSIONING AND TOLERANCING PER ASME Y14.5M-1994 ALL DIMENSIONS ARE IN INCHES TOLERANCES: .XX ±.01 .XXX ±.002 .XXXX ±.0010 ANGLES ± 0° 30' ALL MACHINED SURFACES ✓ 32	APPROVALS DRAWN: TOVALIN CHECKED: ISSUED: ENGR: QA:	DATE 14MAY14	SPACETIME ENGINEERING HARBOR CITY, CA 90710 TITLE 2-PORT, Ka-BAND, Tx/Rx, CP	
	PROPRIETARY AND CONFIDENTIAL THE INFORMATION CONTAINED IN THIS DRAWING IS THE SOLE PROPERTY OF SPACETIME ENGINEERING CO INC. ANY REPRODUCTION IN PART OR AS A WHOLE WITHOUT THE WRITTEN PERMISSION OF SPACETIME ENGINEERING CO INC. IS PROHIBITED.			
	MATERIAL	EAR CONTROLLED Export or re-export subject to the regulations relating to Commerce and Foreign Trade under CFR title 15 parts 700 - 799		SIZE C 74MM8
	SCALE: 1:1	DWG No. ICD 10030-004		REV -
SHEET 1 of 1				