



CONDUCTIVE WAVEGUIDE Flange Gasket Material

JNG-WG002 is an electrically conductive gasket material that has been specifically designed for waveguide flange applications. It is an electrically conductive composite material comprising of silicone elastomer and nickel coated graphite particles.

It is formulated to provide a high level of tear strength and offers flow resistance under high compression forces in the absence of mechanical compression limits. JNG-W002 offers a superior alternative to metal shims and other waveguide gasket options.

The material provides excellent resistance to extremes of temperature and long term ageing.

JNG-WG002 also exhibits good galvanic (electro-chemical) stability when used with aluminium alloys, particularly in humid or damp environments.

Broadwall Couplers



JNG-WG002 is available to suit a range of flange sizes from WG11A through to WG22. Standard gasket thickness is 0.5mm but can be supplied to meet customer requirements. J&N have gaskets in stock & offer a bespoke service to customer specific drawings if required. Gaskets are supplied without backing adhesive as standard, however gaskets can be supplied with a conductive adhesive upon request.

Technical Datasheet

Colour	Dark Grey
Density	2.0 gcm-3
Hardness	80 Shore A
Volume resistivity	<0.05 Ω cm
Tensile strength	2.5 MPa
Tear strength	15 kN/m
Elongation (min.before break)	200%
Compression set - 72 jours at 100°C	<10%
Service temperature range	-55°C to 160°C
Maximum Intermittent temperature	200°C

Shielding Effectiveness

200kHz (H field)	75dB
100MHz (E field)	> 100dB
500MHz (E field)	> 100dB
2GHz (Plane wave)	> 100dB
10GHz (Plane wave)	> 100dB

Dimensions:

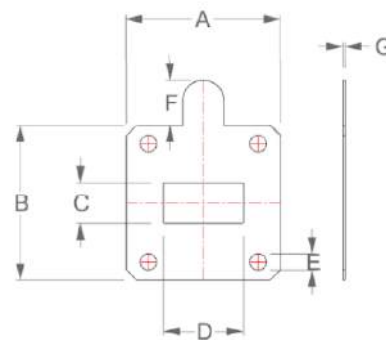


Diagram A

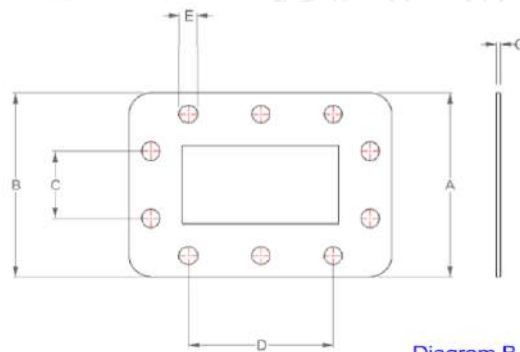


Diagram B



WAVEGUIDE Couplers

Standard Forms

Waveguide Size	Flange Type	Part No
WG11A	CPR	SNGCPR229-0.5
WG14	CPR	SNGCPR137-0.5
WG15	CPR	SNGCPR112-0.5
WG15	UBR	SNGUBR112-0.5
WG16	UBR	SNGUBR100-0.5
WG17	UBR	SNGUBR120-0.5
WG18	UBR	SNGUBR140-0.5
WG20	UBR	SNGUBR220-0.5
WG22	UBR	SNGUBR320-0.5

UK size	EIA Size	A mm	B mm	C mm	D mm	E mm	F mm	G mm	Dia	Flange
WG11A	WR229	98.36	69.62	29.38	58.48	6.86	N/A	0.5	B	CPR
WG14	WR137	67.30	48.20	16.05	35.10	5.20	N/A	0.5	B	CPR
WG15	WR112	63.00	44.00	12.92	28.80	4.34	N/A	0.6	B	CPR
WG15	WR112	47.60	47.60	12.87	28.70	4.30	14.00	0.5	A	UBR
WG16	WR90	41.20	41.20	10.46	23.16	4.29	11.00	0.5	A	UBR
WG17	WR75	37.25	37.25	9.80	19.30	4.00	11.00	0.5	A	UBR
WG18	WR62	33.10	33.10	8.15	16.05	4.00	11.00	0.5	A	UBR
WG20	WR42	22.16	22.16	4.57	10.92	3.00	7.00	0.5	A	UBR

