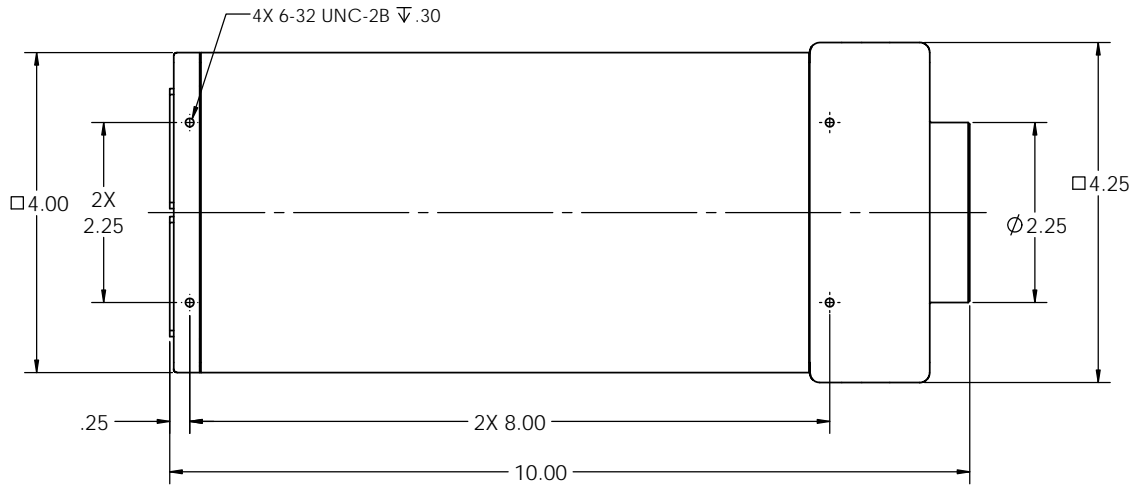
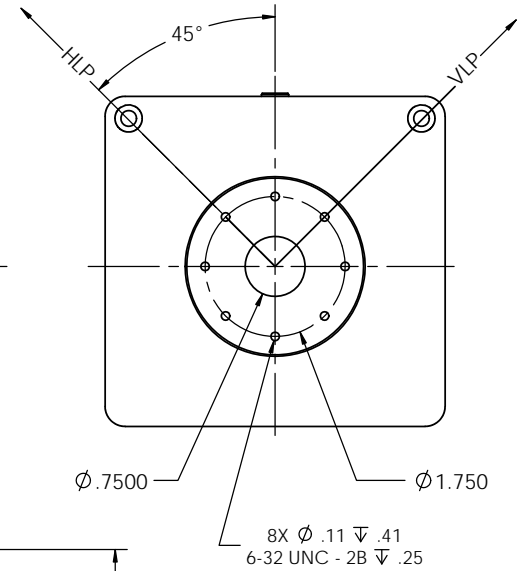
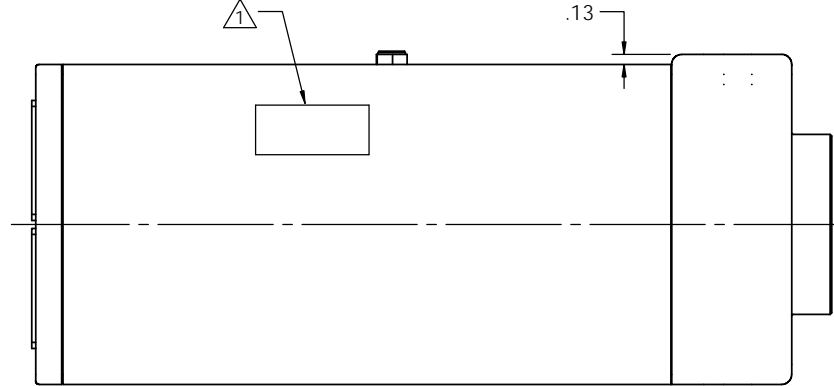
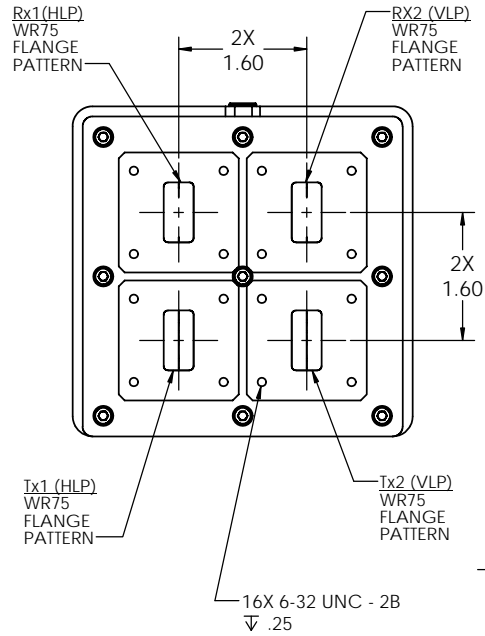


NOTES: UNLESS OTHERWISE SPECIFIED

① IDENTIFICATION PER QMSP 7550 APPROXIMATELY WHERE SHOWN

REVISIONS				
ZONE	REV.	DESCRIPTION	DATE	APPROVED
	P1	PRELIMINARY	28OCT13	
	P2	PRELIMINARY - R/R ADAPT was: 10007-002	20 FEB14	
	P3	PRELIMINARY	01MAY14	
B5	P4	PRELIM - mtg pattern was: 7.50	27MAY14	
E4	P5	PRELIM - add breather vent	23JUN14	
	F6	PRELIMINARY	16 JUL 12	
	P7	PRELIMINARY	12JAN15	



SPECIFICATIONS

<u>FREQUENCY BAND</u>	Rx: 10.70 - 12.75 GHz Tx: 13.75 - 14.50 GHz
<u>INSERTION LOSS</u>	Rx: 0.50 dB MAX Tx: 0.35 dB MAX
<u>VSWR</u>	Rx: 1.25:1 MAX Tx: 1.25:1 MAX
<u>ISOLATION PORT TO PORT</u>	Rx/Tx: 85 dB MIN Tx/Rx: 85 dB MIN Rx/Rx: 35 dB MIN Tx/Tx: 35 dB MIN
<u>CROSS POL</u>	: 35 dB MIN
<u>POWER HANDLING</u>	: 2.0 kW CW (1.0 kW PER Tx PORT)
<u>WEIGHT</u>	: TBD
<u>PRESSURIZATION</u>	: SEALED TO 5.0 PSIG
<u>FINISH</u>	FLANGE FACES: CHROMATE CONVERSION COATED PER MIL-DTL-5541, CL 1A EXTERIOR: PAINT - WHITE COLOR No. 17875 IAW FED-STD-595

INTERFACE DRAWING

DIMENSIONING AND TOLERANCING PER ASME Y14.5M-1994 ALL DIMENSIONS ARE IN INCHES TOLERANCES: .XX ±.01 .XXX ±.002 .XXXX ±.0010 ANGLES ± 0° 30' ALL MACHINED SURFACES \checkmark 32 PROPRIETARY AND CONFIDENTIAL	APPROVALS DRAWN: E. SEIS CHECKED: ISSUED: ENGR: QA:	DATE 28OCT13	SPACETIME ENGINEERING CO. INC. HARBOR CITY, CA 90710 TITLE 4-PORT, Ku-BAND, Tx/Rx, LP	
	PROPRIETARY AND CONFIDENTIAL THE INFORMATION CONTAINED IN THIS DRAWING IS THE SOLE PROPERTY OF SPACETIME ENGINEERING CO. INC. ANY REPRODUCTION IN PART OR AS A WHOLE WITHOUT THE WRITTEN PERMISSION OF SPACETIME ENGINEERING CO. INC. IS PROHIBITED.			
	MATERIAL EAR CONTROLLED Export or re-export subject to the regulations relating to Commerce and Foreign Trade under CFR title 15 parts 700 - 799	SIZE C 74MM8		DWG No. ICD 10012-004
	SCALE: 1:1.2	SHEET 1 of 1		REV P7